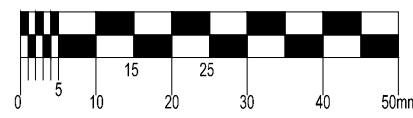


ON ORIGINAL



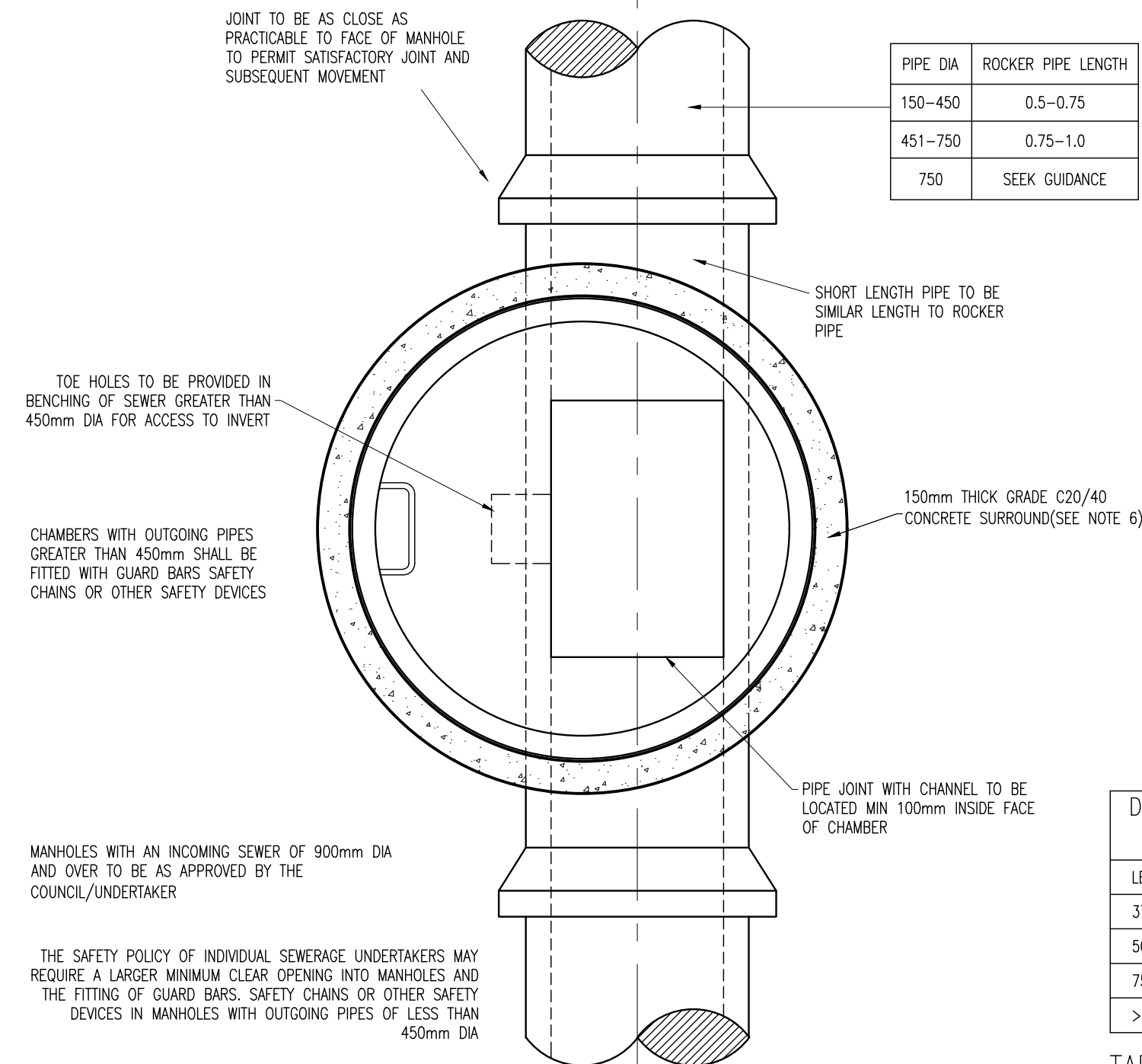
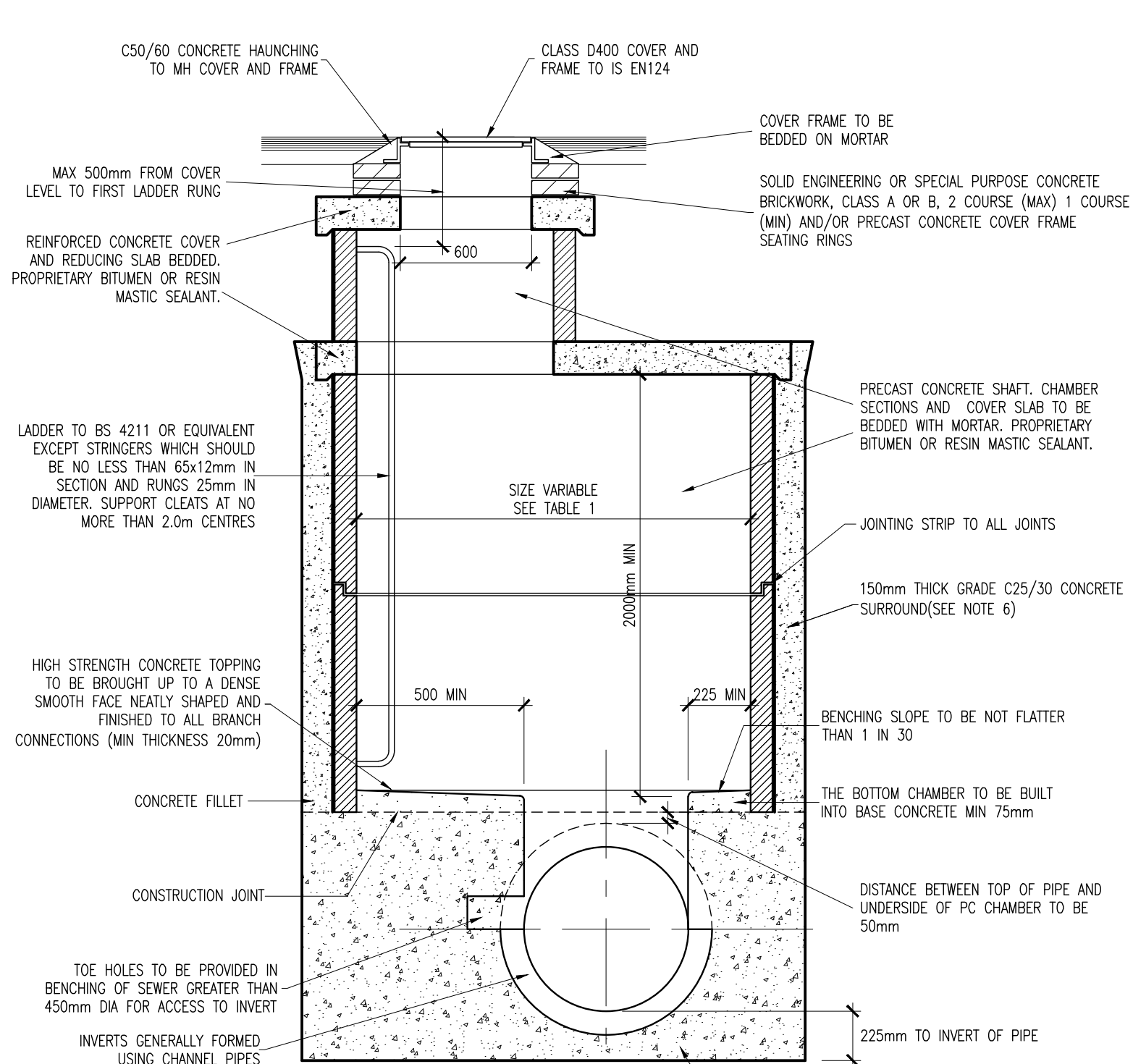
NOTES:

GENERAL NOTES:

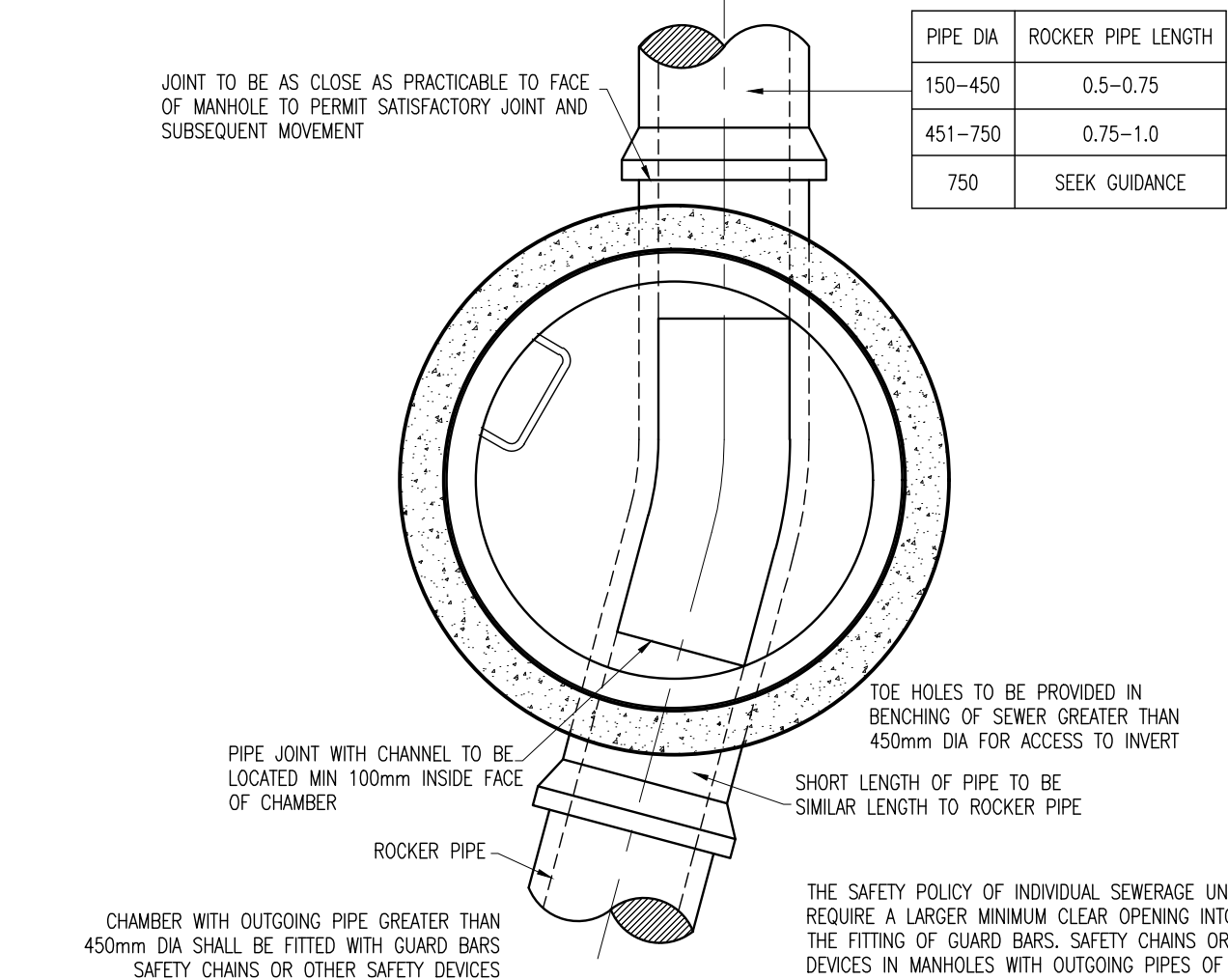
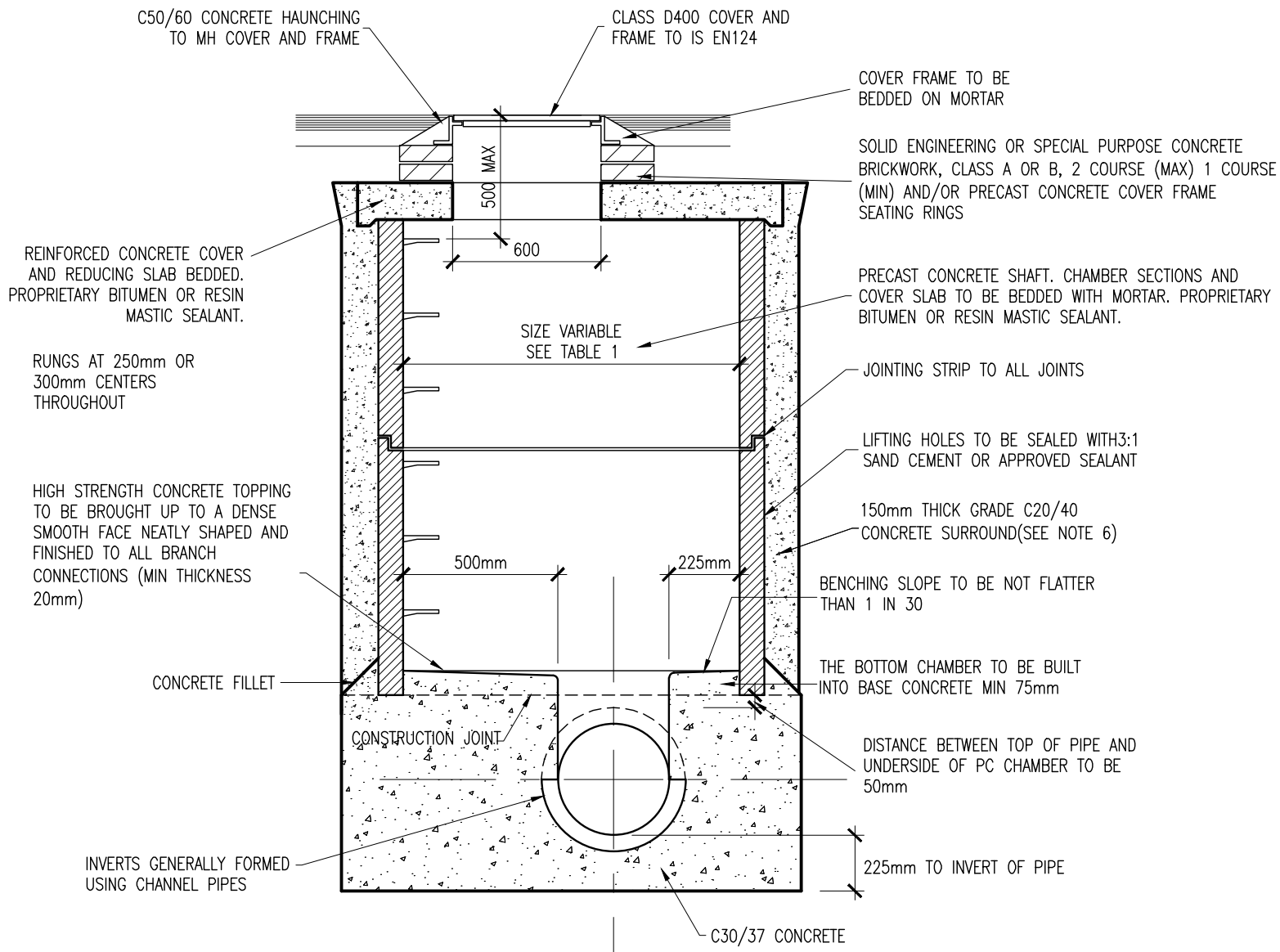
- ALL SURFACE WATER MANHOLES AND DRAINAGE ARE TO BE CONSTRUCTED IN ACCORDANCE WITH THE REQUIREMENTS OF THE GREATER DUBLIN CODE OF PRACTICE FOR DRAINAGE WORKS.
- ALL FOUL DRAINAGE WORKS TO BE IN ACCORDANCE WITH IRISH WATERS' CODE OF PRACTICE FOR WASTEWATER SUPPLY AND WASTEWATER INFRASTRUCTURE STANDARD DETAILS.
- SURFACES FINISHES FOR CONCRETE:
 - CLASS F1 FOR ALL CONCRETE 100mm OR MORE BELOW GROUND LEVEL.
 - CLASS F3 FOR ALL EXPOSED CONCRETE ABOVE 100mm BELOW GROUND LEVEL.
- ALL EXPOSED CORNERS ON CONCRETE SHALL BE CHAMFERED WITH 25mm x 25mm CHAMFERS.
- ALL STRUCTURAL CONCRETE (HEADWALLS, PC MANHOLES, PETROL INTERCEPTOR SLABS) TO RECEIVE MC DUR 1680 (OR SIMILAR APPROVED TAR MODIFIED EPOXY RESIN) TO ALL BURIED SURFACES. TO FINISH 100mm BELOW GROUND LEVEL.
- ALL SEWERS SHALL BE PRESSURE TESTED PRIOR TO BACKFILLING.
- TYPE 1 GRANULAR MATERIAL : BROKEN STONE OR GRAVEL TO PASS 10mm SIEVE AND BE RETAINED ON 5mm SIEVE. TYPE 2 GRANULAR MATERIAL : BROKEN STONE OR GRAVEL TO PASS 10mm - 25mm SIEVE, ACCORDING TO PIPE SIZE, (SEE TABLE) AND BE RETAINED ON 5mm SIEVE.
- TYPE 3 SELECTED FILL : UNIFORM READILY COMPACTED MATERIAL FREE FROM TREE ROOTS, VEGETABLE MATTER, BUILDING DEBRIS, AND FROZEN SOIL AND EXCLUDING CLAY LUMPS RETAINED ON A 75mm SIEVE AND STONES RETAINED ON A 37.5mm SIEVE.
- ALL LADDERS, RUNGS, SAFETY CHAINS ETC SHALL BE HOT DIPPED GALVANISED TO BS 729 OR EQUIVALENT.

TYPE 2 GRANULAR MATERIAL :

	100% PASSING
UP TO 225mm	10mm SIEVE
225 TO 450mm	20mm SIEVE
ABOVE 450mm	25mm SIEVE



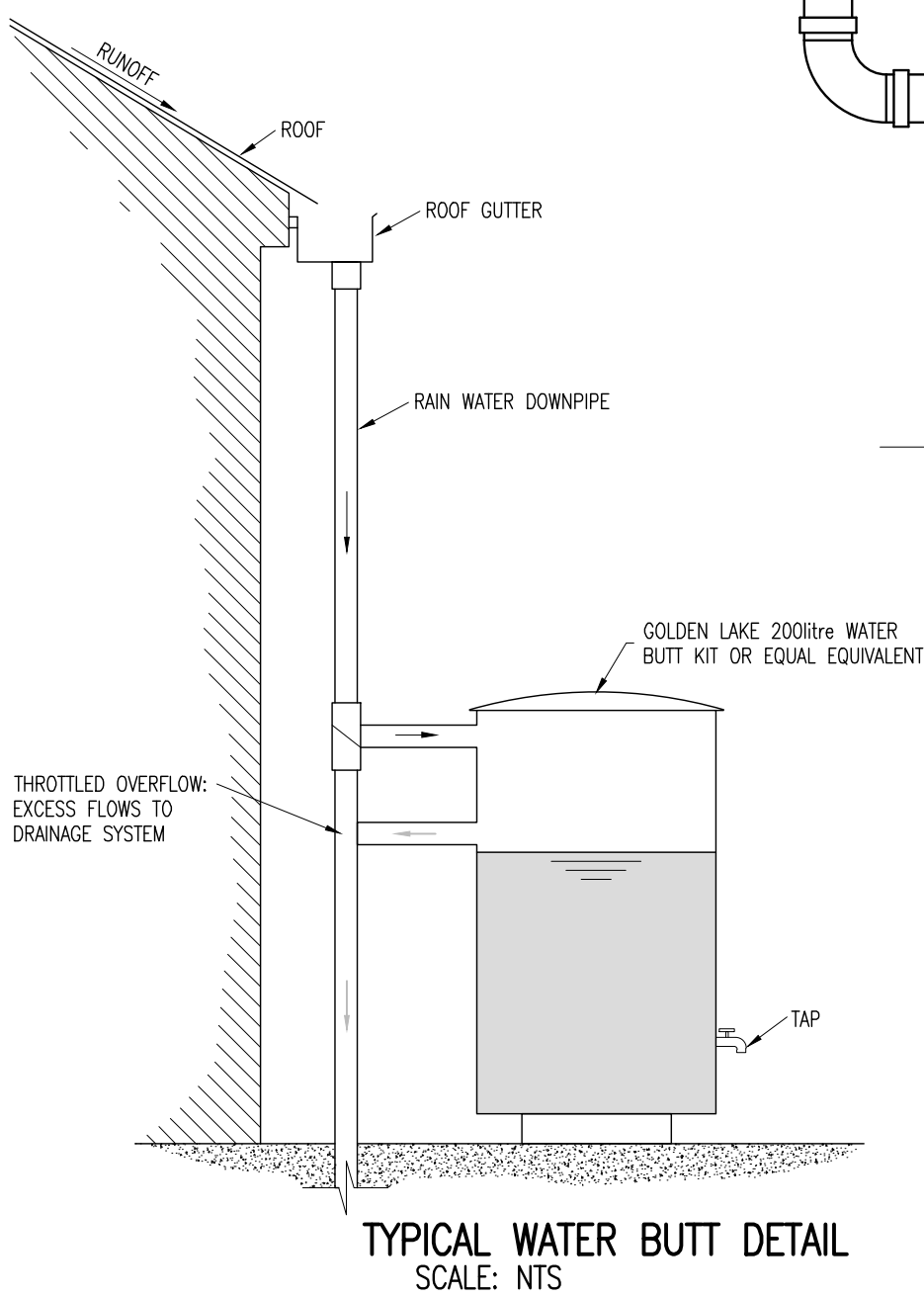
TYPICAL MANHOLE DETAIL - TYPE K
DEPTH TO SOFFIT 3 TO 6m
SCALE 1:25



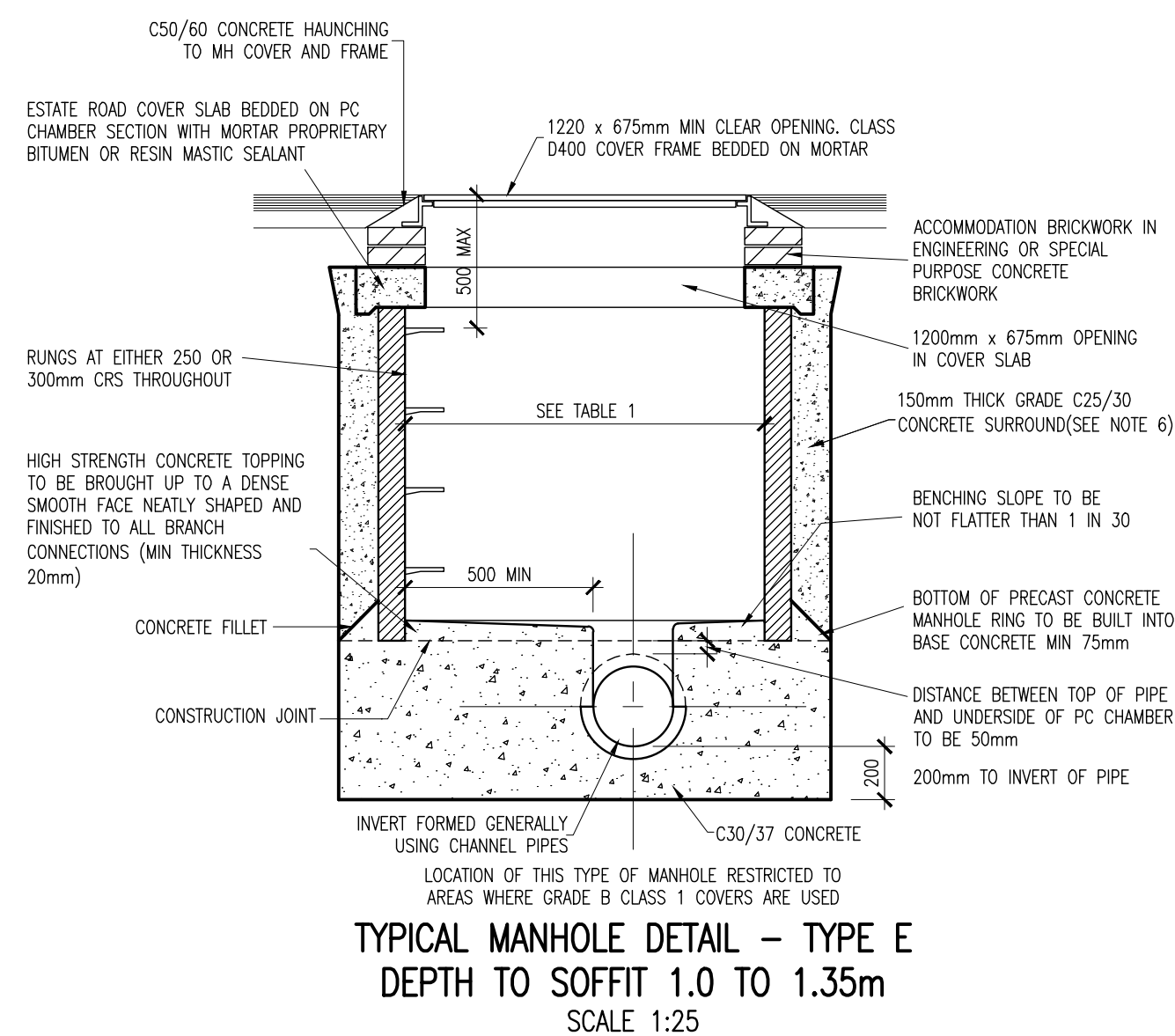
TYPICAL MANHOLE DETAIL - TYPE J
DEPTH TO SOFFIT 1.35 TO 3m
SCALE 1:25

DIAMETER OF LARGEST PIPE IN MANHOLE (mm)	CHAMBER SECTION DIAMETER (mm)
LESS THAN 375	1200
375 - 450	1350
500 - 700	1500
750 - 900	1800
> 750	PIPE SIZE + 1.3m

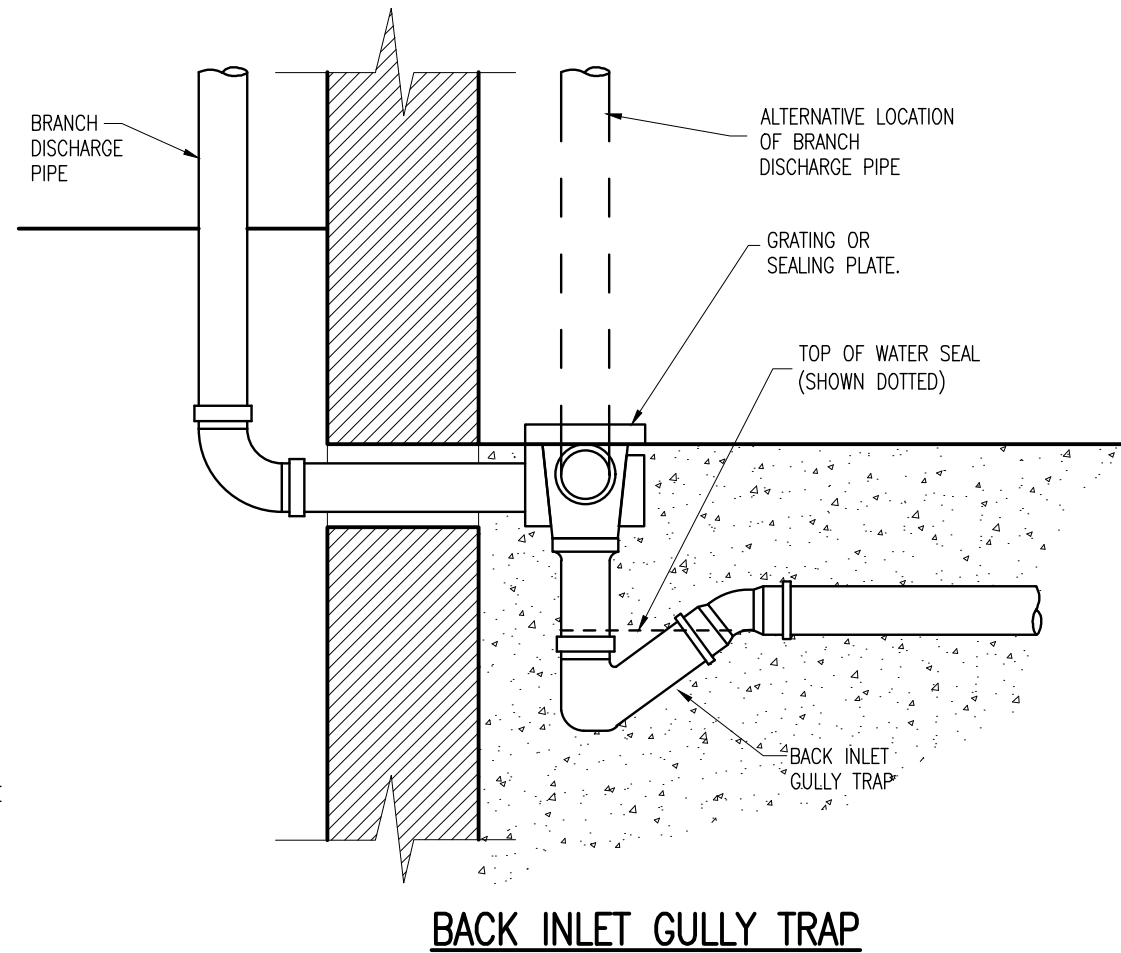
TABLE 1



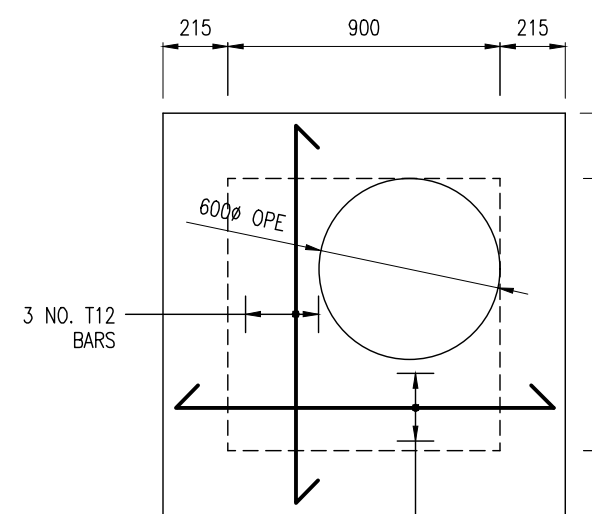
TYPICAL WATER BUTT DETAIL
SCALE: NTS



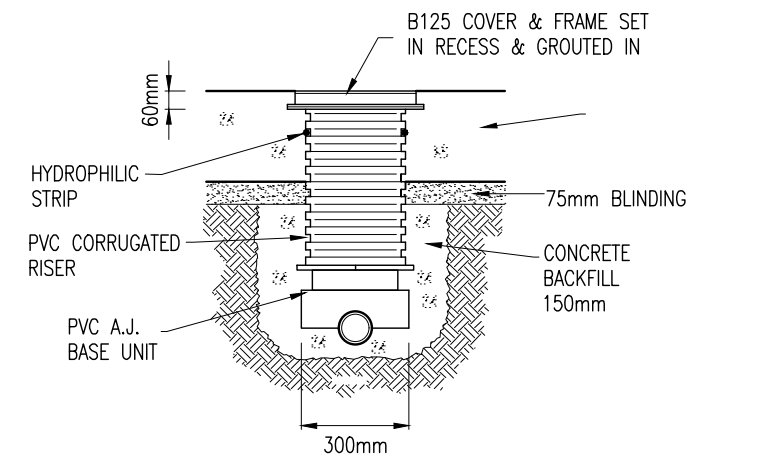
TYPICAL MANHOLE DETAIL - TYPE F
DEPTH TO SOFFIT LESS THAN 1.0m
SCALE 1:25



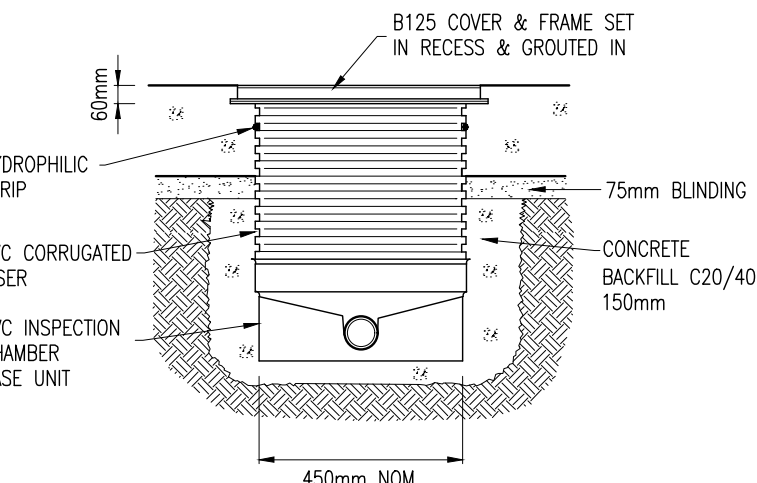
BACK INLET GULLY TRAP



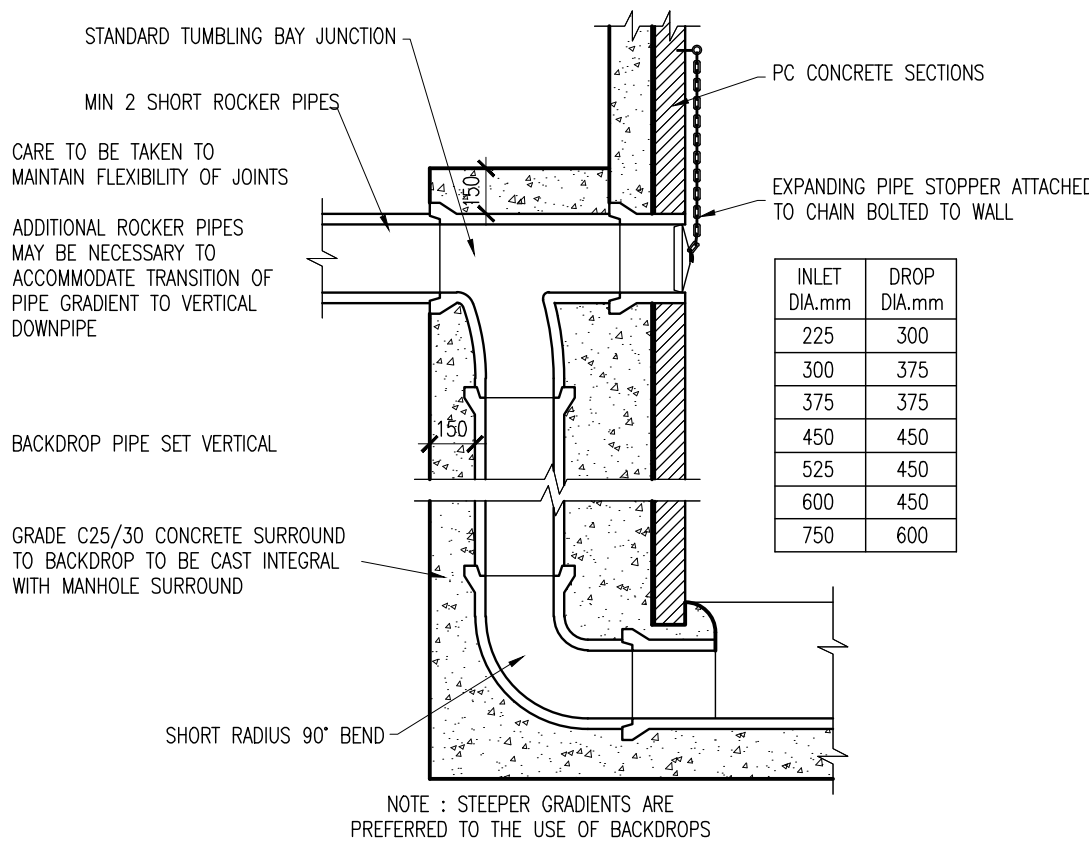
TYPICAL INSITU SHALLOW MANHOLE DETAIL
SCALE 1:25



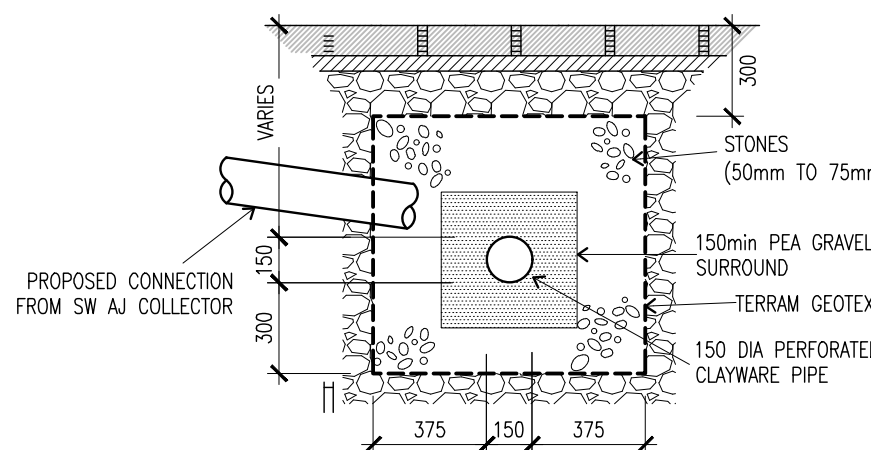
A.J. DETAIL (600mm MAX DEPTH)



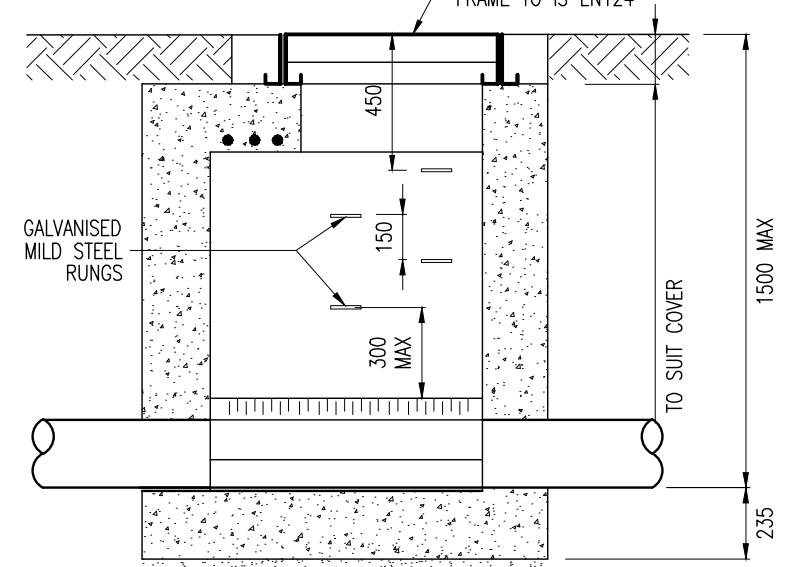
INSPECTION CHAMBER (1000mm MAX DEPTH)



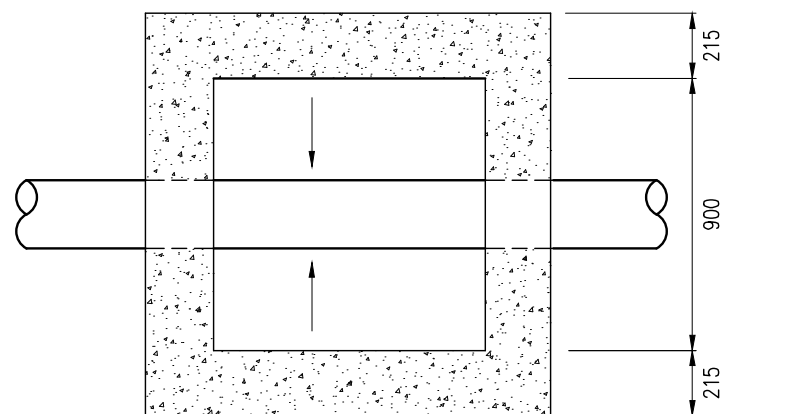
TYPICAL VERTICAL BACKDROP DETAIL
SCALE 1:25



TYPICAL FILTER DRAIN



SECTION



PLAN

P01	15-03-21	APB APPLICATION	JJB	SB
rev	date	description	by	chkd.
		A - Approved		
		B - Approved with comments		
		C - Do not use		
suitability		issue purpose		
S2 - INFORMATION		PLANNING		

DBFL Consulting Engineers
Civil, Structural & Transportation Engineering
www.dbfl.ie

DUBLIN OFFICE: Ormond House, Upper Ormond Quay, Dublin 1, D01 WY04
PHONE: +353 1 460 4000
CORK OFFICE: Phoenix House, Monahan Road, Cork, T12 H1K7
PHONE: +353 (0) 21 224558
WATERFORD OFFICE: Suite 8b The Atrium, Marlboro Gate, Canada Street, Waterford, X91 W028
PHONE: +353 01 906 500

project ref.

WHITE PINES EAST,
RATHFARNHAM, DUBLIN 16

drawing title

TYPICAL DRAINAGE DETAILS SHEET 1

client

ARDSTONE HOMES LTD

designed by	author	scale	sheet size
SB	JJB	AS NOTED	A1
drawing no.		revision	
190230-DBFL-CS-SP-DR-C-5010		P01	